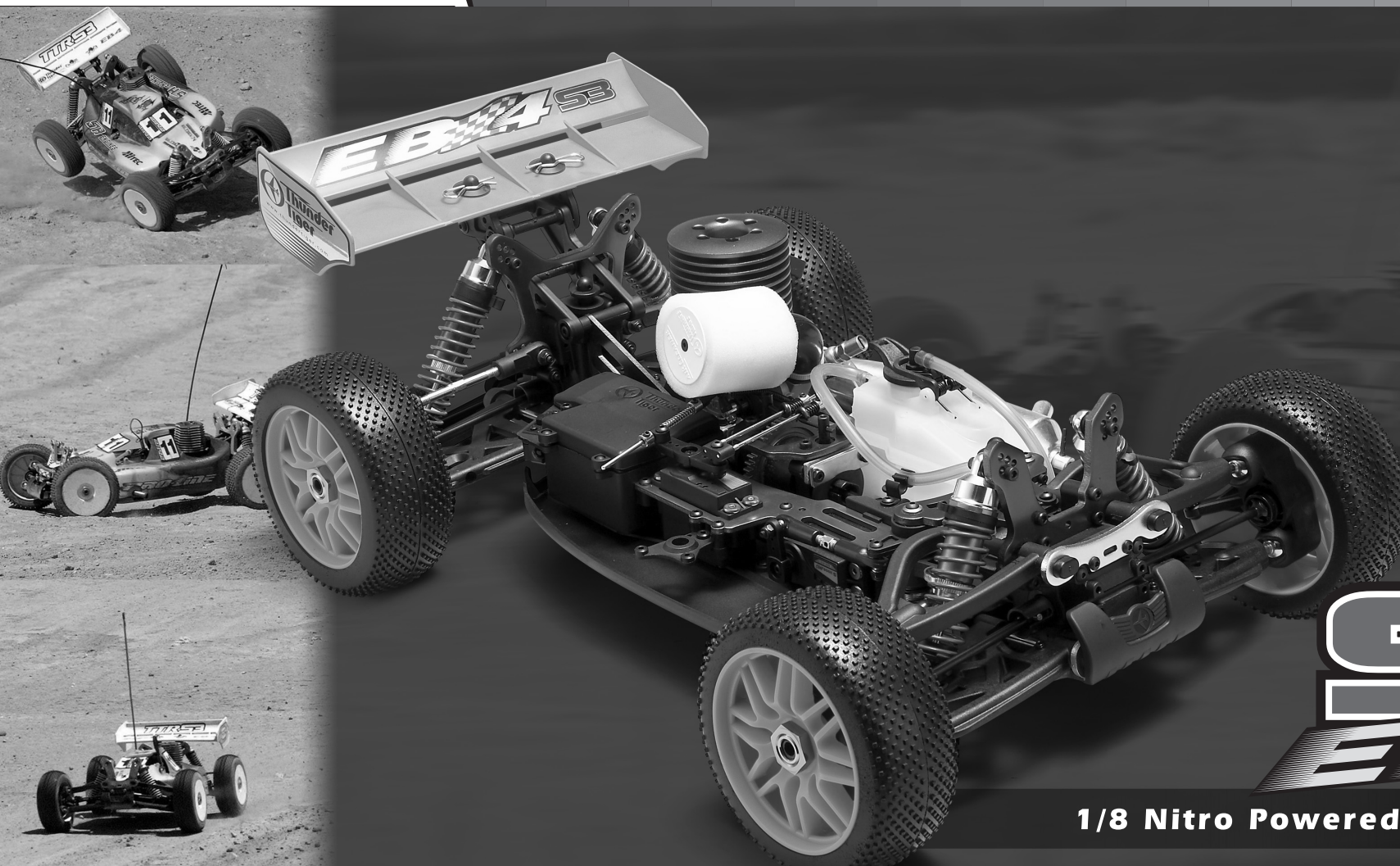




# PARTS CATALOG FOR EB-4 S3 RTR

No.6231-F



# S3 EB-4

**1/8 Nitro Powered 4WD Racing Buggy**

The contents shown are subject to change without prior notice due to product improvements and specification changes.

Manufactured by **THUNDER TIGER CORPORATION**

<http://www.thundertiger.com>



No.6231-F

## 1/8 Nitro Powered RTR Racing Buggy



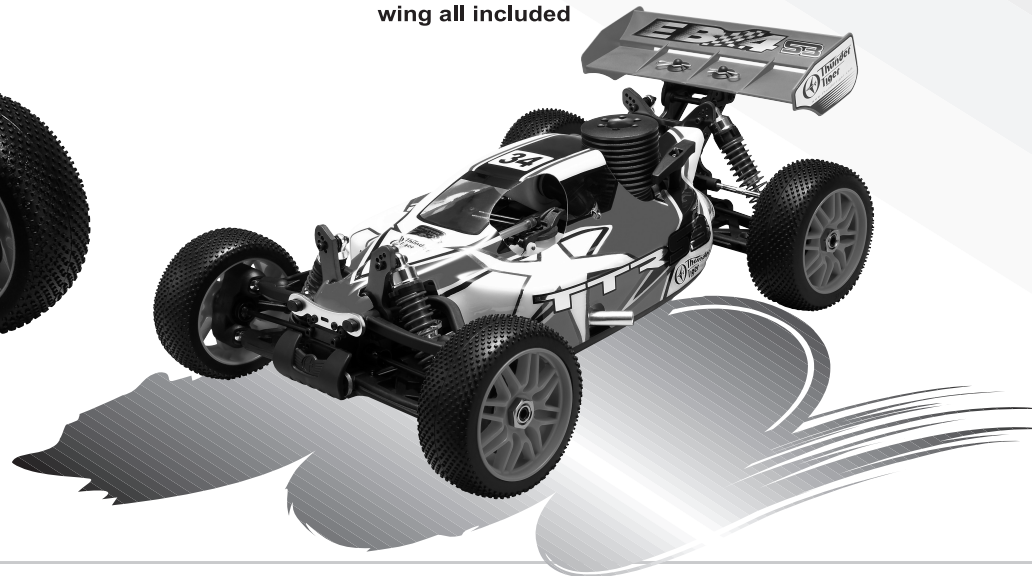
*Experience the most outstanding performance ready to run buggy ever. The EB-4 S3 RTR is a fully assembled nitro racing buggy that shares 90% of the same parts as the ROAR championship winner- the EB-4 S3 Pro Kit.*

*The EB-4 S3 RTR features the powerful Thunder Tiger Pro-21 / PRO-28 pull start engine and the ever popular TT Jaguar radio system, all factory installed for complete and total driving control. A full line of Factory Approved Team performance parts are available for the EB-4 S3 RTR, to let you trick out your buggy to your specifications!*

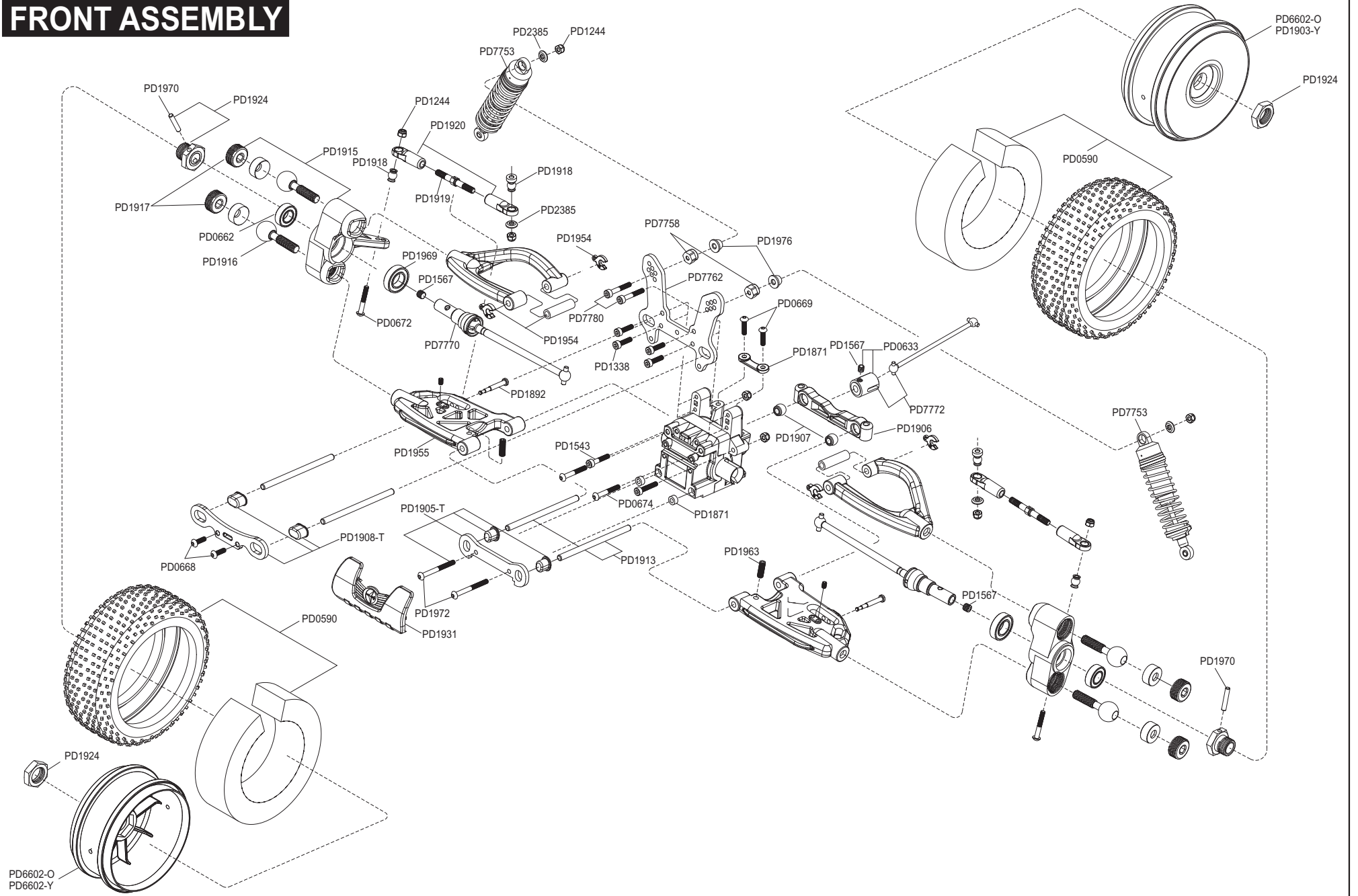


## INNOVATIVE FEATURES

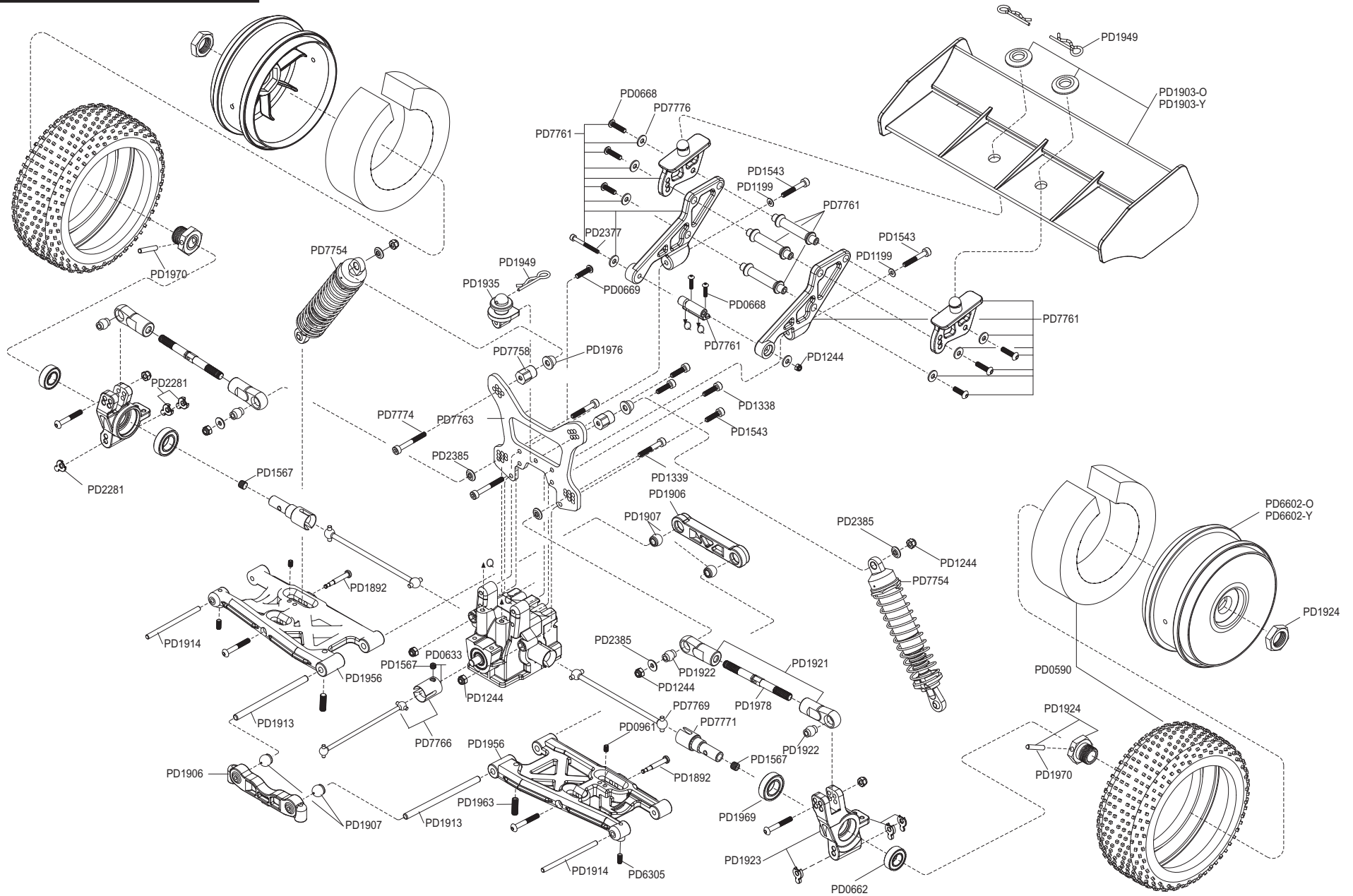
- Anodized chassis with narrow configuration for stable handling.
- Easily adjustable front pivot-ball suspension
- Full metal oil-filled shocks with large volume anodized shock bodies
- Thunder Tiger Pro-21 / Pro-28 ball-raced pullstart engine with slide carburetor
- Dual stage air cleaner
- Polished CNC machined aluminum tuned pipe and manifold
- 3 small-lightened gear differentials with constant shaft driven 4WD design
- Dual metal brake disc
- Heavy duty CVD universal front drive train
- Lightened and small size flywheel
- Anodized alloy front brace, radio tray and center diff top plate
- Laid down steering servo for low center of gravity
- Captured hinge pins require no retaining clips
- Complete set of rubber-sealed ball bearings included
- Wheels, printed polycarbonate body and one piece nylon wing all included



# FRONT ASSEMBLY

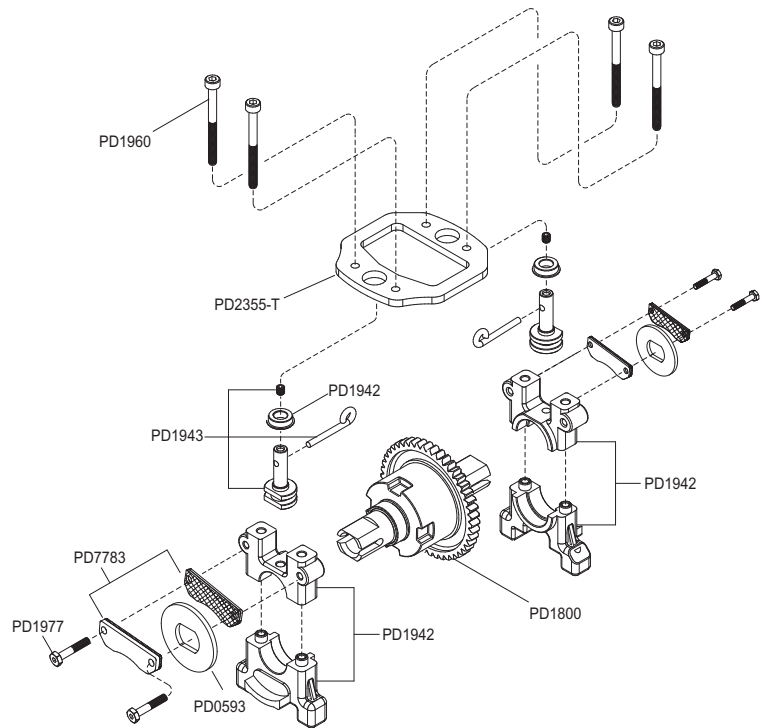


# REAR ASSEMBLY

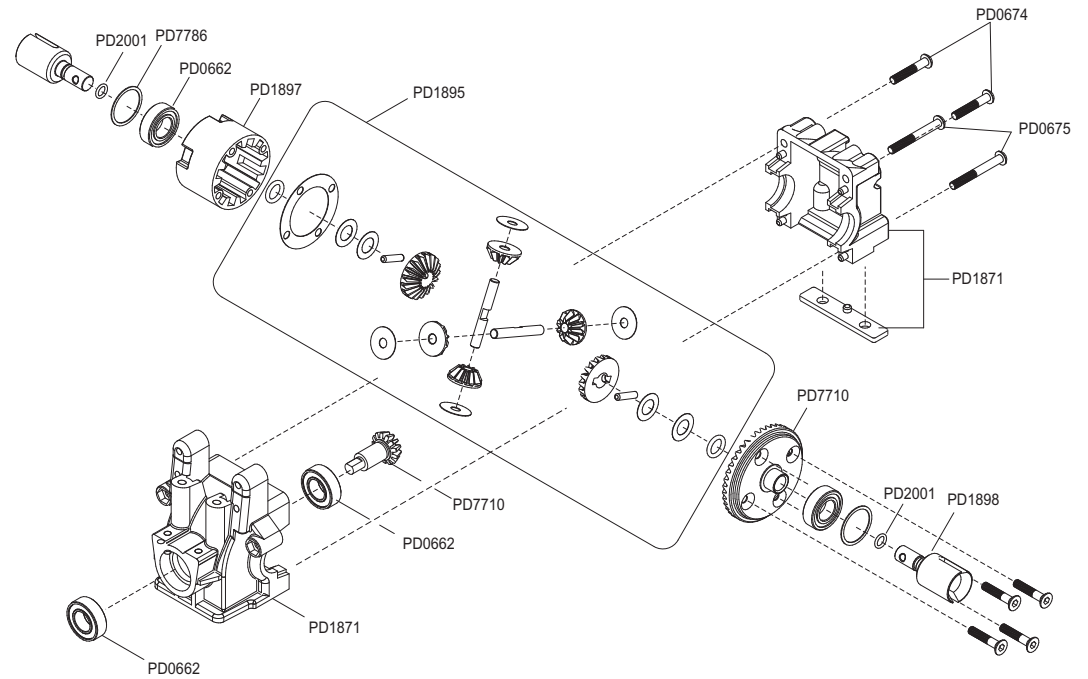




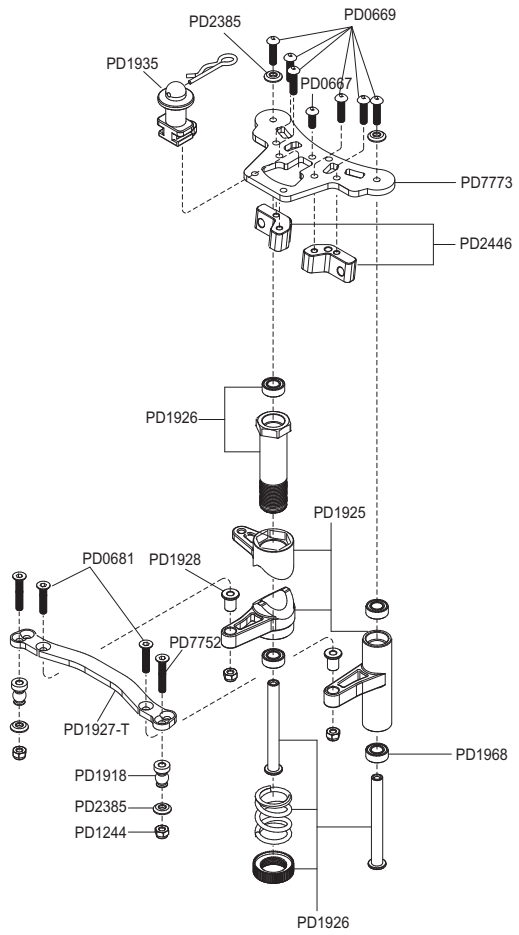
# CTR DIFF. MOUNT ASSEMBLY



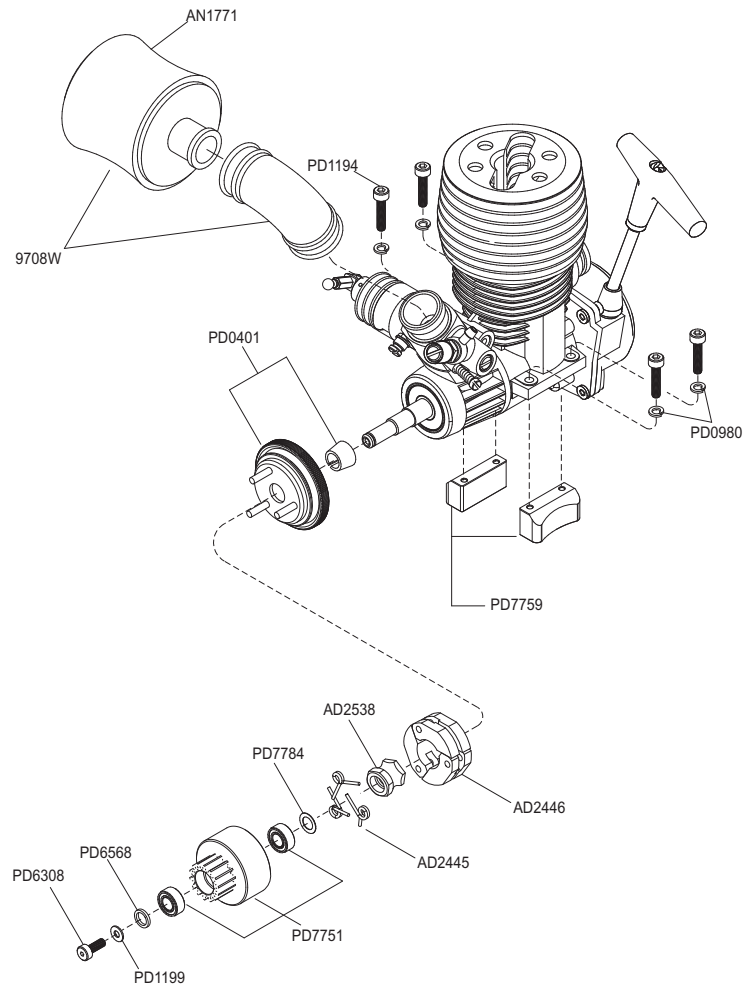
# FR/RR DIFF. ASSEMBLY



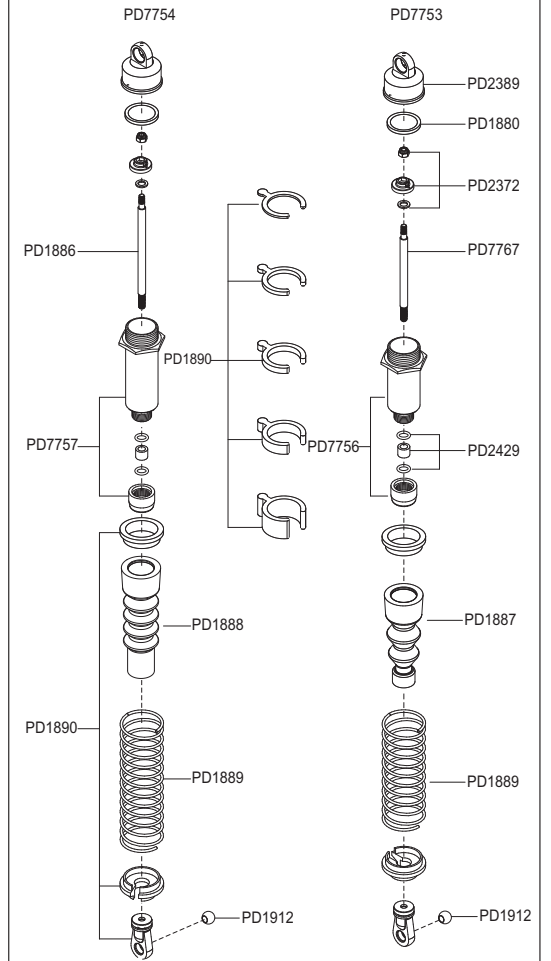
# SERVO SAVER ASSEMBLY



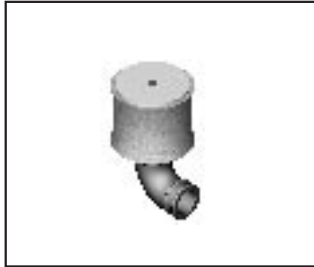
# ENGINE ASSEMBLY



# SHOCK ASSEMBLY



# EB-4 S3 RTR PARTS LIST



9708-W AIR FILTER(WHITE),.21



AD2445 1/8 CLUTCH SPRING(3)



AD2446 1/8 CLUTCH SHOE(3),EB



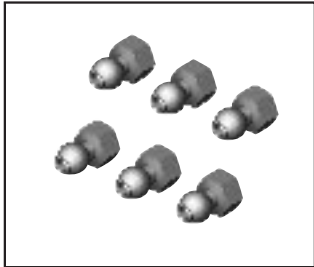
AD2538 1/8 CLUTCH NUT,EB



AN1771 FOAM FILTER(3),1/8



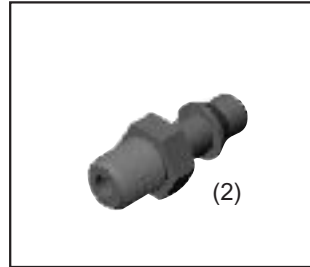
PD0401 FLYWHEEL SET



PD0547 BALL STUD,(L) 4mm



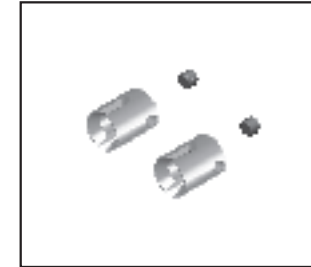
PD0590 1/8 TIRE SET W/ FOAM, CUBIC



PD0592 PRESSURE FITTING (2)



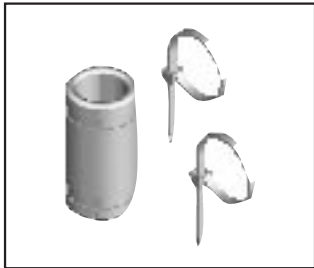
PD0593 STEEL BRAKE DISC, EB/K



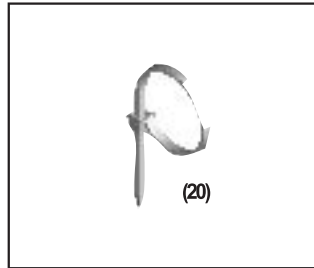
PD0633 DRIVE CAP JOINT, EB/K



FOR TRANS CASE, OUTSIDE  
PD0662 BALL BEARING SET, 8x16x5mm



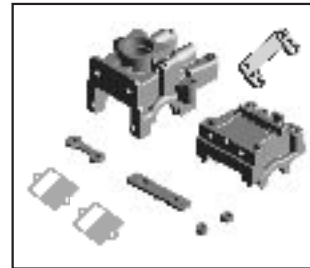
PD0871 COUPLER EXHAUST



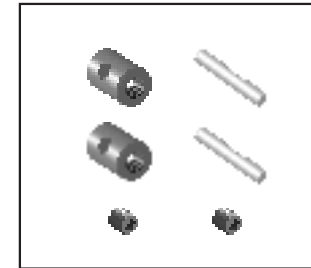
PD0982 NYLON STRAP,LARGE (20)



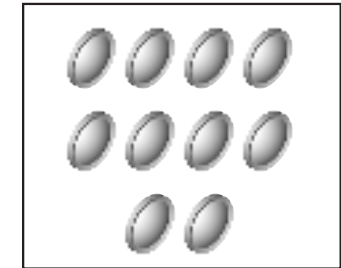
PD1800 DIFFERENTIAL SET CENTER



PD1871 TRANS CASE/BULKHEAD SET



PD1875 UNIVERSAL REBUILD KIT, S3



PD1880 SHOCK DIAPHRAGM(10),S3



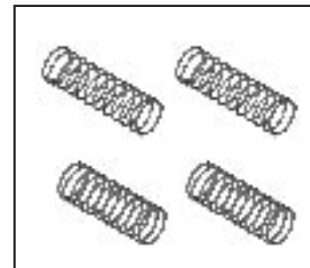
PD1886 FR SHOCK SHAFT(2),S3



PD1887 FR SHOCK BOOT(4),S3



PD1888 RR SHOCK BOOTS(4),S3



PD1889 FR/RR SHOCK SPRING (2),S3



PD1890 SHOCK PLASTIC PARTS, S3



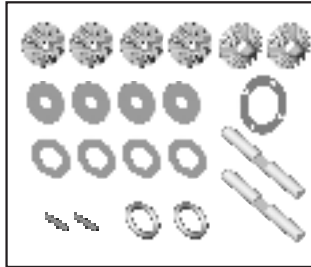
PD1892 FR/RR SHOCK SET PIN S3



# EB-4 S3 RTR PARTS LIST



PD1893 STEEL MAIN GEAR, 46T



PD1895 DIFF BEVEL GEARS & PARTS,S3



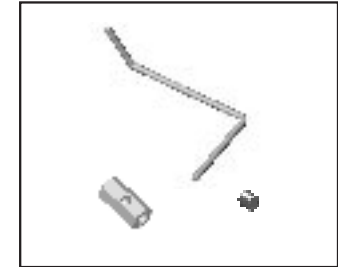
PD1897 DIFF CASE



PD1898 DIFF OUTDRIVE(2) FR/RR,S3



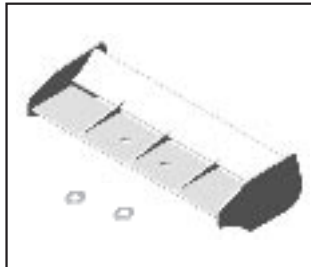
PD1899 DIFF OUTDRIVE(2),CTR,S3



PD1900 MUFFLER MOUNT SET,S3



PD1902 CHASSIS SIDE GUARD,S3



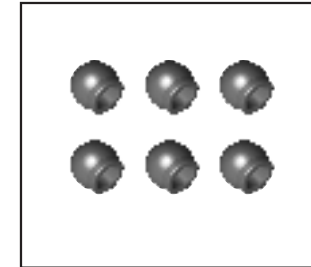
PD1903-O REAR WING(ORANGE),1/8  
PD1903-Y REAR WING(YELLOW),1/8



PD1905-T FF SUSP.PLATE SET,S3



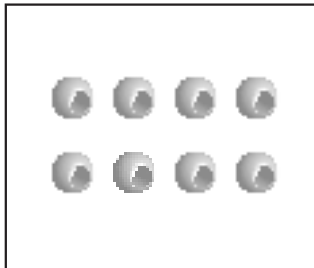
PD1906 SUSP.ARM MOUNT SET,S3



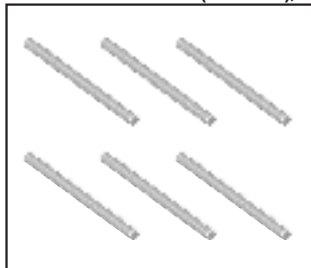
PD1907 ARM MOUNT BALL SET,S3



PD1908-T UPPER ARM PLATE,S3



PD1912 SHOCK END/SWAY BAR BALL,S3



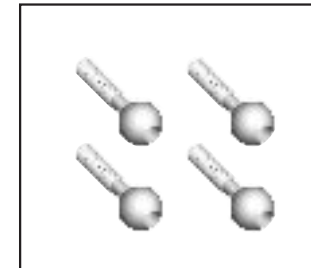
PD1913 SUSP,HINGE PIN SET



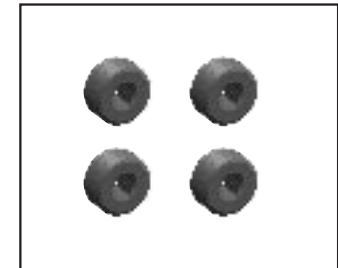
PD1914 RR LOWER HINGE PIN,S3



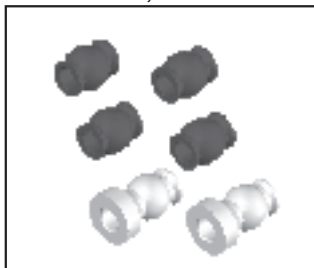
PD1915 KNUCKLE,S3



PD1916 PIVOT BALL SET(4),S3



PD1917 ADJ. SCREW (4),S3



PD1918 STEERING LINKAGE BALL STUD,S3



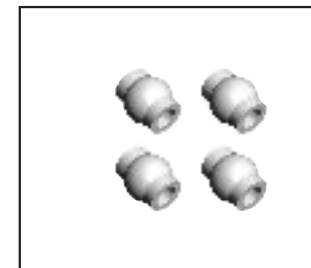
PD1919 STEERING TURNBUCKLE,S3



PD1920 STEERING TIE END,S3



PD1921 RR TIE END,S3

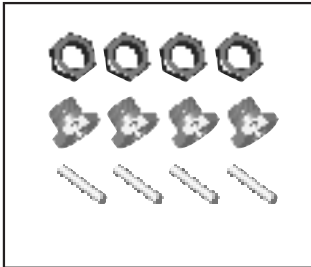


PD1922 REAR UPPER ARM BALL,S3



PD1923 REAR HUB SET,S3

# EB-4 S3 RTR PARTS LIST



PD1924 HEX WHEEL ADAPTER SET, S3



PD1925 BELLCRANK SET, S3



PD1926 SERVO SAVER SET, S3



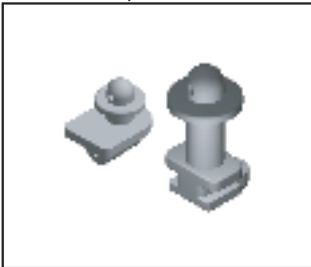
PD1927-T STEERING SLIDER



PD1928 SERVO SAVER BUSHING, S3



PD1931 FR BUMPER, S3



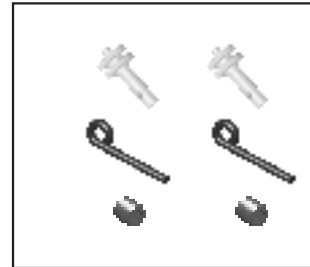
PD1935 FF/RR BODY MOUNT



PD1938 ENGIN MOUNT WASHER, S3



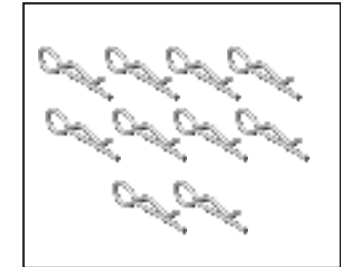
PD1942 CTR DIFF MOUNT, S3



PD1943 BRAKE CAM & HARDWARE, S3



PD1948 R CLIPS(4), L, S3



PD1949 BODY CLIPS(10), LARGE



PD1950 SERVO MOUNT ACC, S3



FOR ACE R/C FUTABA SERVO

PD1952 SERVO HORN, TH&BK/S3



PD1954 FRONT UPPER ARM SET, S3



PD1955 LOWER SUSP ARM SET, S3



PD1956 REAR SUSP ARM SET



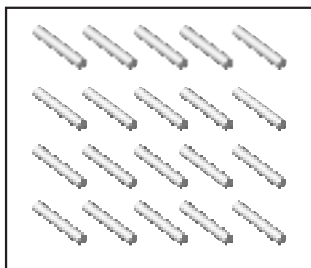
FOR SERVO SAVER

PD1968 BALL BEARING, d5\*D10\*W4



FOR FR HUB INSIDE

PD1969 BALL BEARING, d10\*D19\*W5



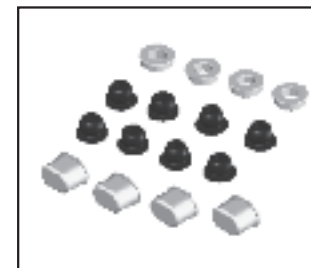
PD1970 DOWEL PIN SET(20)



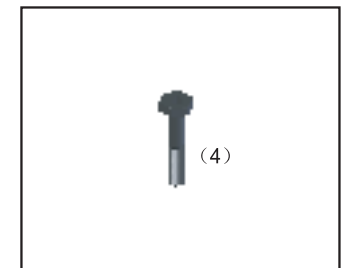
PD1974 DOWEL PIN SET(20)



PD1975 HEX WRENCH SET



PD1976 SHOCK PLASTIC BUSHING, S3



PD1977 BRAKE PAD FIXING SCREW (4)

# EB-4 S3 RTR PARTS LIST



PD1978 RR TURNBUCKLE



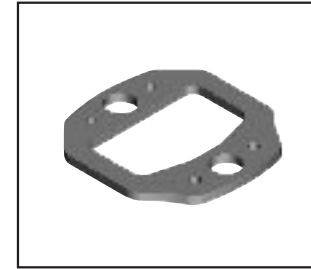
PD1985 TT LOGO DECAL



PD2258 FUEL TANK



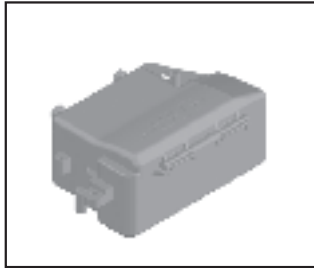
PD2281 CASTER SHIM(12),S3



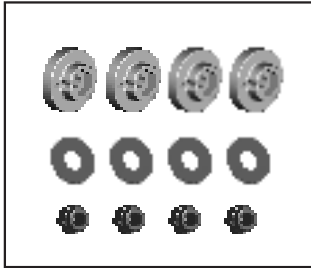
PD2355-T CTR DIFF PLATE



PD2358 FR TORQUE ROD



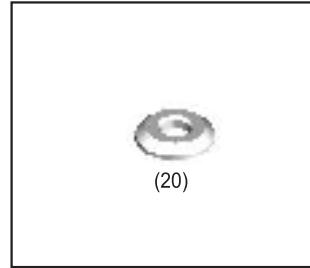
PD2365 RECEIVER BOX



PD2372 SHOCK PISTON(4)



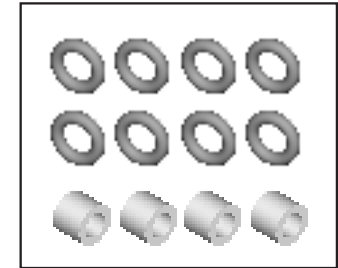
PD2382 1/8 TUNED PIPE



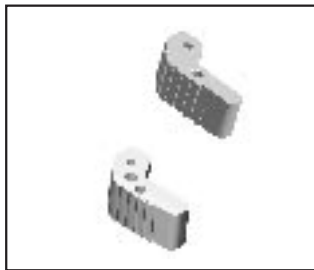
PD2385 WASHER SET



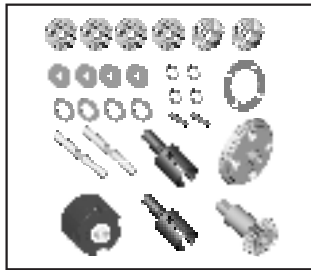
PD2389 FR SHOCK CAP(2),S3



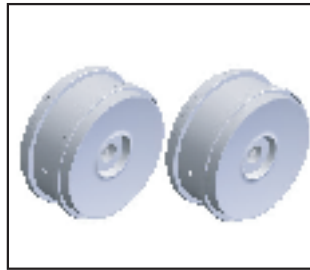
PD2429 SHOCK O-RINGS&SPACERS



PD2446 UPPER ARM HOLDER



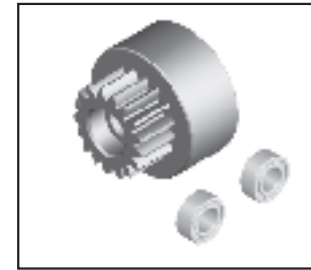
PD2448 DIFF SET,FR/RR



PD6602-O VELOCITY WHL,1/8(ORANGE)  
PD6602-Y VELOCITY WHL,1/8(YELLOW)



PD7710 DIFFERENTIAL GEAR SET



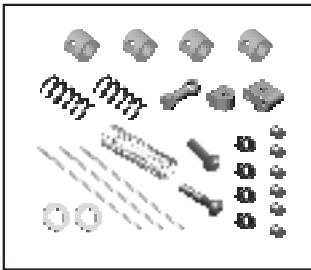
PD7751 1/8 CLUTCH BELL,26MM



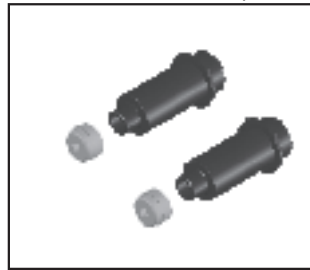
PD7753 FR SHOCK SET(2)



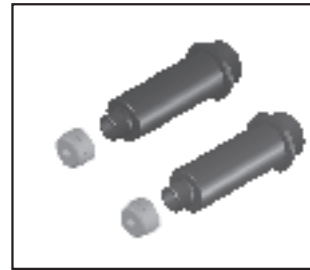
PD7754 RR SHOCK SET(2)



PD7755 THROTTLE / BRAKE  
LINKAGE SET



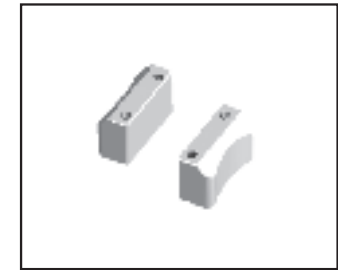
PD7756 FR SHOCK BODY(2)



PD7757 RR SHOCK BODY(2)

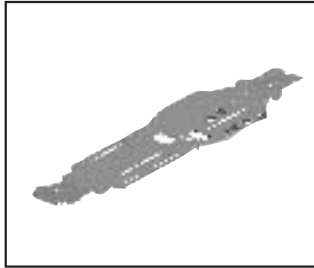


PD7758 FR/RR SHOCKMOUNT STUD  
,S3

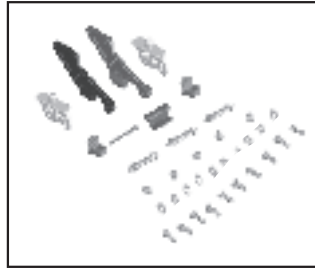


PD7759 ENGINE MOUNT

# EB-4 S3 RTR PARTS LIST



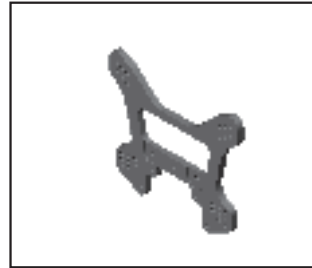
PD7760 CHASSIS PLATE,S3



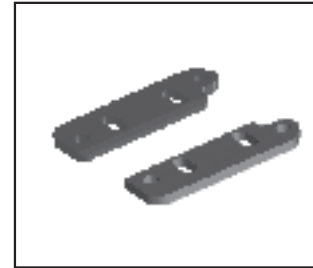
PD7761 WING MOUNT ASSEMBLY ,S3



PD7762 FR SHOCK TOWER



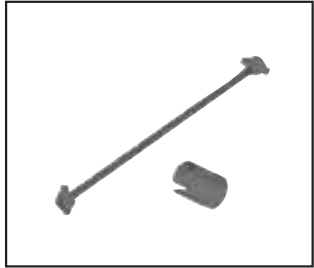
PD7763 RR SHOCK TOWER



PD7764 ENGINE MOUNT PLATE,S3



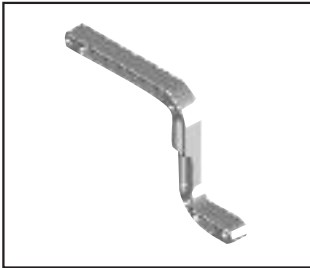
PD7765 SERVO TRAY POST



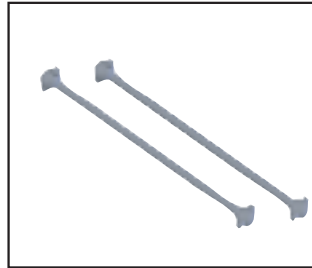
PD7766 RR CENTER DRIVE AXLE,S3



PD7767 FR SHOCK SHAFT(2)



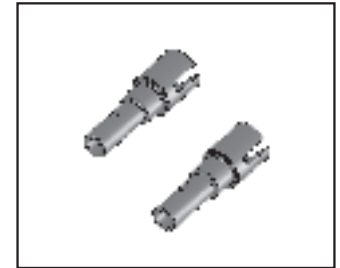
PD7768 CHASSIS GUARD



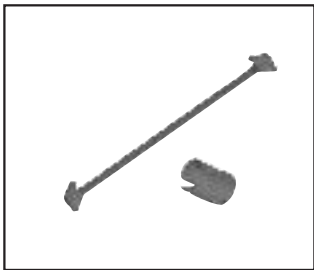
PD7769 REAR DRIVE AXLE, S3



PD7770 FR CVA UNIVERSAL(2),S3



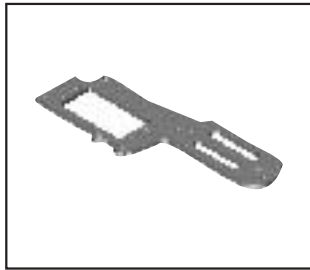
PD7771 REAR WHEEL AXLE,S3



PD7772 FR CENTER DRIVE AXLE ,S3



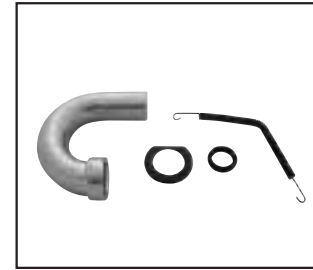
PD7773 SERVO SAVER TOP PLATE



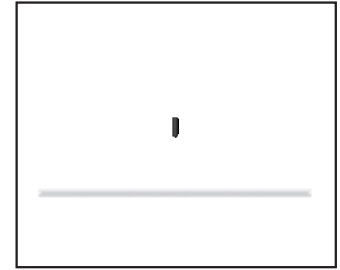
PD7775 SERVO TRAY,S3



PD7777 RR CHASSIS BRACE



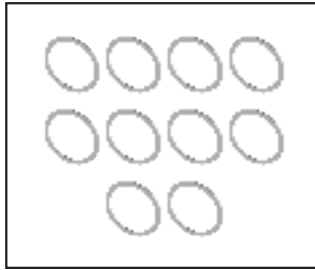
PD7781 EXHAUST HEADER PIPES



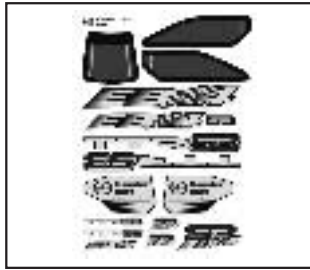
PD7782 ANTENNA BAG,1/8



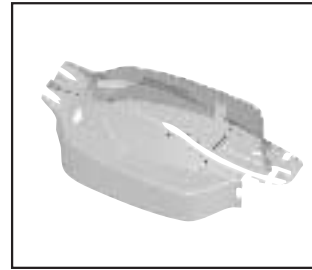
PD7783 BRAKE PAD SET



PD7786 DIFF SHIME(10),0.2mm, S3



PD7787 BODY DECAL,S3 RTR



PD7788 CLEAR BODY SET W/DECAL,S3 RTR

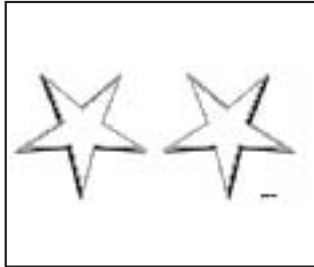


PD7789 PRINTED BODY SET (BLUE), S3 RTR

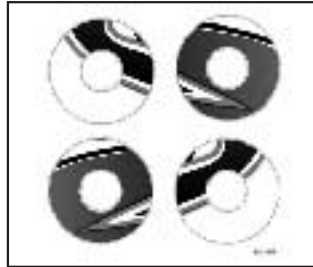


PD7790 PRINTED BODY SET (ORANGE), S3 RTR

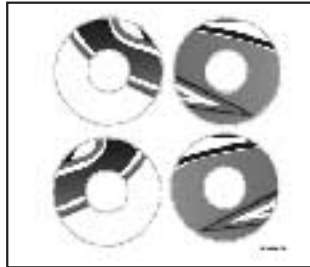
# EB-4 S3 RTR PARTS LIST



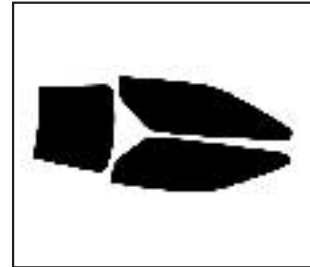
PD7791 STAR DECAL



PD7792L WHEEL DECAL, BLUE



PD7792R WHEEL DECAL, ROUGE



PD7794 WINDOW MASK,S3



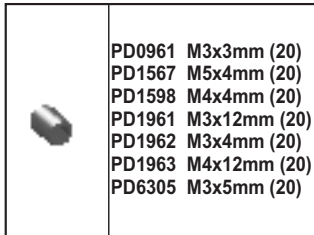
PD0667 M3x8mm (20)  
 PD0668 M3x10mm (20)  
 PD0669 M3x12mm (20)  
 PD0670 M3x14mm (20)  
 PD0671 M3x16mm (20)  
 PD0672 M3x18mm (20)  
 PD0673 M3x20mm (20)  
 PD0674 M3x22mm (20)  
 PD0675 M3x25mm (20)  
 PD1972 M3x30mm (20)

BUTTON HEAD SELF TAPPING SCREW



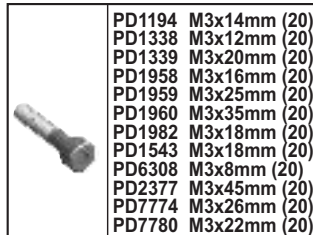
PD0677 M3x8mm (20)  
 PD0678 M3x10mm (20)  
 PD0679 M3x12mm (20)  
 PD0680 M3x14mm (20)  
 PD0681 M3x16mm (20)  
 PD0682 M3x18mm (20)  
 PD0683 M3x20mm (20)  
 PD1973 M4x12mm (20)  
 PD6310 M4x10mm (20)  
 PD7752 M3x22mm (20)

FLAT HEAD



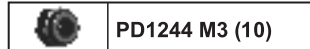
PD0961 M3x3mm (20)  
 PD1567 M5x4mm (20)  
 PD1598 M4x4mm (20)  
 PD1961 M3x12mm (20)  
 PD1962 M3x4mm (20)  
 PD1963 M4x12mm (20)  
 PD6305 M3x5mm (20)

SET SCREW



PD1194 M3x14mm (20)  
 PD1338 M3x12mm (20)  
 PD1339 M3x20mm (20)  
 PD1958 M3x16mm (20)  
 PD1959 M3x25mm (20)  
 PD1960 M3x35mm (20)  
 PD1982 M3x18mm (20)  
 PD1543 M3x18mm (20)  
 PD6308 M3x8mm (20)  
 PD2377 M3x45mm (20)  
 PD7774 M3x26mm (20)  
 PD7780 M3x22mm (20)

SOCKET HEAD MACHINE SCREW



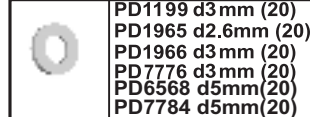
PD1244 M3 (10)

LOCK NUT



PD1964 M4 (20)

NUT



PD1199 d3mm (20)  
 PD1965 d2.6mm (20)  
 PD1966 d3mm (20)  
 PD7776 d3mm (20)  
 PD6568 d5mm(20)  
 PD7784 d5mm(20)

WASHER



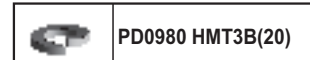
PD2000 Ø5.8x9.6(10)  
 PD2001 Ø4.4x0.8(10)

ORING



PD1971 M3x14mm(20)

FLAT HEAD SOCKET SCREW



PD0980 HMT3B(20)

SPRING WASHER



# EB-4 S3 RTR SPARE PARTS LIST

MAR 2007

PART#	DESCRIPTION	NOTE
9708-W	AIR FILTER(WHITE),,21	
AD2445	1/8 CLUTCH SPRING(3)	
AD2446	1/8 CLUTCH SHOE(3),EB	
AD2538	1/8 CLUTCH NUT,EB	
AN1771	FOAM FILTER(3),1/8	
PD0401	1/8 3-SHOE FLYWHEEL,EB	
PD0547	BALL STUD,(L) 4mm	
PD0590	1/8 TIRE W/ FOAM,CUBIC	
PD0592	PRESSURE FITTING	
PD0593	STEEL BRAKE DISC,EB/K	
PD0633	DRIVE CAP JOINT, EB/K	
PD0662	B B,MSEALED 8x16x5mmEB4	
PD0667	BT MACH. SCREW,M3x8	
PD0668	BT MACH. SCREW,M3x10	
PD0669	BT MACH. SCREW,M3x12	
PD0670	BTH.M SCREW(20),M3*14	
PD0671	BT MACHINE SCREW(20),M3X16mm	
PD0672	BT MACH.SCREW, M3*18	
PD0673	BTH.M SCREW(20),M3*20	
PD0674	BTH.M SCREW(20),M3*22	
PD0675	BTH.M SCREW(20),M3*25	
PD0677	CT H.M SCREW(20),M3*8	
PD0678	CT H.M SCREW(20),M3*10	
PD0679	CT H.M SCREW(20),3*12	
PD0680	CT MACH. SCREW,M3x14	
PD0681	CT MACH. SCREW,M3x16	
PD0682	CT MACH. SCREW,M3x18	
PD0683	CT MACH. SCREW,M3x20	
PD0871	COUPLER EXHAUST TUBE	
PD0961	SET SCREW(20),M3*3	
PD0980	SPRING WASHER(20)	
PD0982	NYLON STRAP,LARGE	
PD1194	SKH.M SCREW(20),M3*14	
PD1199	WASHER(20),3mm	
PD1244	LOCK NUT,BLACK 3mm	
PD1338	SOCKET SCREW(20),3*12	
PD1339	SKH.M SCREW(20),M3*20	
PD1543	SK H.M SCREW (20),M3*18	
PD1567	SET SCREW(20),M5x4mm	
PD1598	SET SCREW(20),M4x4mm	

PART#	DESCRIPTION	NOTE
PD1800	DIFF. SET,CTR,S3	
PD1871	TRANS CASE/BULKHEAD SET	
PD1875	UNIV. REBUILD KIT,S3	
PD1880	SHOCK DIAPHRAGM(10),S3	
PD1886	FR SHOCK SHAFT(2),S3	
PD1887	FR SHOCK BOOT(4),S3	
PD1888	RR SHOCK BOOT	
PD1889	FR/RR SHOCK SPRING(2),S3	
PD1890	SHOCK PLASTIC PARTS,S3	
PD1892	FR/RR SHOCK SET PIN,S3	
PD1893	STEEL MAIN GEAR,46T/S3	
PD1895	DIFF BEVEL GEARS & PARTS,S3	
PD1897	DIFF. CASE, S3	
PD1898	DIFF. OUTDRIVE(2) FR/RR,S3	
PD1899	DIFF. OUTDRIVE(2),CTR,S3	
PD1900	MUFFLER MOUNT SET,S3	
PD1902	CHASSIS SIDE GUARD,S3	
PD1903-O	REAR WING(ORANGE),1/8	
PD1903-Y	REAR WING(ORANGE),1/8	
PD1905-T	FF SUSP.PLATE SET,S3	
PD1906	SUSP. ARM MOUNT SET,S3	
PD1907	ARM MOUNT BALL SET,S3	
PD1908-T	UPPER ARM PLATE,S3	
PD1912	SHOCK END/SWAY BAR BALL,S3	
PD1913	SUSP. HINGE PIN SET,S3	
PD1914	RR LOWER HINGE PIN,S3	
PD1915	KNUCKLE ,S3	
PD1916	PIVOT BALL SET (4),S3	
PD1917	ADJ. SCREW (4),S3	
PD1918	STEERING LINKAGE BALL STUD	
PD1919	STEERING TURNBUCKLE,S3	
PD1920	STEERING TIE END,S3	
PD1921	RR TIE END,S3	
PD1922	REAR UPPER ARM BALL,S3	
PD1923	REAR HUB SET.S3	
PD1924	HEX WHEEL ADAPTER SET,S3	
PD1925	BELLCRANK SET,S3	
PD1926	SERVO SAVER SET,S3	
PD1927-T	STEERING SLIDER,S3	
PD1928	SERVO SAVER BUSHING,S3	

PART#	DESCRIPTION	NOTE
PD1931	FR BUMPER,S3	
PD1935	FF/RR BODY MOUNT &POST	
PD1938	ENGIN MOUNT WASHER,S3	
PD1942	CTR DIFF MOUNT, S3	
PD1943	BRAKE CAM & HARDWARE,S3	
PD1948	R CLIPS(4),L,S3	
PD1949	BODY CLIPS(10),LARGE	
PD1950	SERVO MOUNT ACC,S3	
PD1952	SERVO HORN, TH&BK/S3	
PD1954	FRONT UPPER ARM SET(2),S3	
PD1955	LOWER SUSP ARM SET(2), S3	
PD1956	REAR SUSP ARM SET(2),S3	
PD1960	BT MACHINE SCREW,M3x35	
PD1961	SET SCREW,M3x12	
PD1962	SET SCREW,M3x4	
PD1963	SET SCREW,M4x12	
PD1964	NUT(20),M4	
PD1965	WASHER(20),d2.6mm	
PD1966	WASHER,d3mm	
PD1968	BALL BEARING,d5*D10*W4	
PD1969	BALL BEARING,d10*D19*W5	
PD1970	DOWEL PIN SET(20)	
PD1971	FLAT HEAD SOCKET SOCKET	
PD1972	BT MACHING SCREW(20),M3X30mm	
PD1973	CT MACHINE SCREW,M4x12	
PD1974	CROSS WRENCH&FUEL PIPE	
PD1975	HEX WRENCH SET	
PD1976	SHOCK PLASTIC BUSHING,S3	
PD1977	BRAKE PAD FIXING SCREW	
PD1978	RR TURNBUCKLE,S3	
PD1985	TT LOGO DECAL	
PD2001	ORING(10),d4.4x0.8	
PD2258	FUEL TANK & POST, S3	
PD2281	CASTER SHIM,S3	
PD2355-T	CTR DIFF PLATE	
PD2358	FR TORQUE ROD	
PD2365	RECEIVER BOX	
PD2372	SHOCK PISTON(4)	
PD2377	SK H.M SCREW(20),M3*45	
PD2382	1/8 TUNED PIPE	



# EB-4 S3 RTR SPARE PARTS LIST

MAR 2007

PART#	DESCRIPTION	NOTE
PD2385	WASHER SET	
PD2389	FR SHOCK CAP(2),S3	
PD2429	SHOCK O-RINGS&SPACERS	
PD2446	FR UP SUSP	
PD2448	DIFF.SET,FR&RR	
PD6305	SET SCREW,M3X5mm	
PD6308	SK H.M SCREW (20),M3*8	
PD6310	CT H.M SCREW, M4*10	
PD6568	WASHER(20),5mm	
PD6602-O	VELOCITY WHL,1/8(ORANGE)	
PD6602-Y	VELOCITY WHL,1/8(YELLOW)	
PD7710	DIFFERENTIAL GEAR SET	
PD7751	1/8 CLUTCH BELL,14T,S3	
PD7752	CT H.M SCREW, M3*22	
PD7753	FR SHOCK SET(2),S3	
PD7754	RR SHOCK SET(2),S3	
PD7755	THROTTLE / BRAKE LINKAGE,S3	

PART#	DESCRIPTION	NOTE
PD7756	FR SHOCK BODY(2),S3	
PD7757	RR SHOCK BODY(2),S3	
PD7758	FR/RR SHOCKMOUNT STUD,S3	
PD7759	ENGINE MOUNT,S3	
PD7760	CHASSIS PLATE,S3	
PD7761	WING MOUNT ASSEMBLY,S3	
PD7762	FR SHOCK TOWER,S3	
PD7763	RR SHOCK TOWER,S3	
PD7764	ENGINE MOUNT PLATE,S3	
PD7765	SERVO TRAY POST,S3	
PD7766	RR CENTER DRIVE AXLE,S3	
PD7767	FR SHOCK SHAFT(2),S3	
PD7768	CHASSIS GUARD,S3	
PD7769	REAR DRIVE AXLE BAG,S3	
PD7770	FR CVA UNIVERSAL(2),S3	
PD7771	REAR WHEEL AXLE, S3	
PD7772	FR CENTER DRIVE AXLE, S3	

PART#	DESCRIPTION	NOTE
PD7773	SERVO SAVER TOP PLATE, S3	
PD7774	SKH.M SCREW(20), M3*26	
PD7775	SERVO TRAY, S3	
PD7776	WASHER, S3	
PD7777	RR CHASSIS BRACE, S3	
PD7780	SKH.M SCREW(20), M3*22	
PD7781	EXHAUST HEADER PIPES, S3	
PD7782	ANTENNA BAG, 1/8	
PD7783	BRAKE PAD SET	
PD7784	WASHER(20), $\phi 8^* \phi 5^*0.2$	
PD7786	DIFF SHIME(10),0.2M, S3	
PD7787	BODY DECAL,S3 RTR	
PD7788	CLEAR BODY SET W/DECAL,S3 RTR	
PD7789	PRINTED BODY SET (BLUE),S3 RTR	
PD7790	PRINTED BODY SET (ORANGE), S3 RTR	
PD7791	STAR DECAL	
PD7792L	WHL DECAL, BLUE	
PD7792R	WHL DECAL, ROUGE	
PD7794	WINDOW MASK,S3	



# EB-4 S3 RTR OPTIONAL PARTS LIST

MAR 2007

PART#	DESCRIPTION	NOTE
9708-B	AIR FILTER,1/8,BLACK	
9708-G	AIR FILTER,1/8,GREEN	
9708-P	AIR FILTER,1/8,PINK	
9796	3-CHAMER TUNED PIPE,EFRA 2035	
9796-1	3-CHAMBER TUNED PIPE,W/MANIFOLD EFRA 2035	
9797	3-CHAMBER TUNED PIPE, EFRA 2039	
9797-1	3-CHAMBER TUNED PIPE,W/MANIFOLD EFRA 2039	
AD2523-R	ANODIZED WASHER(20),OPT	
PD0399	ALUM.TURNBUCKLE WRENCH,5mm	
PD0470	CLUTCH BELL 26mm,15T,1/8	
PD0619	CLUTCH BELL 26mm,14T,1/8	
PD0680	CT MACH.SCREW(20),M3X14	
PD1840	7075FR SHOCK TOWER,S3	
PD1841	7075RR SHOCK TOWER,S3	
PD1845	CTR DIFF MOUNT,S3 OPT	
PD1847	ALUM FR PLATE FR TRANS,FF-1,S3 OPT	
PD1848	ALUM FR PLATE FR TRANS,FF0,S3 OPT	
PD1849	ALUM FR PLATE FR TRANS,FF+1,S3 OPT	
PD1850	ALUM RR PLATE FR TRANS,FR0,S3 OPT	
PD1851	A7075 FR PLATE RR TRANS,RF0,S3 OPT	
PD1852	A7075 FR PLATE RR TRANS,RF+4,S3 OPT	
PD1853	A7075 RR PLATE RR TRANS,RF+2,S3 OPT	
PD1854	A7075 RR PLATE RR TRANS,RR,S3 OPT	
PD1855	A7075 UPPER ARM PLATE,S3 OPT	
PD1856	UPPER ARM HOLDER,S3 OPT	
PD1857	A7075 STEERING SLIDER W/BB,S3OP	
PD1858	ALUM SERVO SAVER SET,S3 OPT	
PD1859	LITE ENGINE MOUNT,S3	
PD1860	HARD SWAY BAR BALL,S3	
PD1861	HEATSINK DISC BRAKE,S3 OPT	
PD1862	WING POST,S3 OPT	
PD1863	LITE PIVOT BALL,S3 OPT	
PD1864	LIT HEX WHL ADAPTER,S3 OPT	
PD1865	LITE SELF-LOCK WHL HEX NUT,S3 OPT	
PD1866	SWA BAR,GOLD 3mm,S3 OPT	
PD1867	SWAY BAR,SILVER 2.5mm,S3 OPT	
PD1873	RR CVA UNIVERSAL(2),S3	
PD1879	SHOCK PISTON(4),S3 OPT	
PD1882	FR SHOCK BODY(2),S3	
PD1883	A7075 RR SHOCK BODY	

PART#	DESCRIPTION	NOTE
PD1884	A7075 SHOCK CAP	
PD1891	ALUM FR/RR SHOCK MOUNT STUD,S3	
PD1894	CNC DIFF BEVEL GEAR SET	
PD1896	DIFF SHIME(10),0.3mm,S3	
PD1903-B	REAR WING,BLACK,1/8	
PD1903-G	REAR WING,GREEN,1/8	
PD1903-P	REAR WING,PINK,1/8	
PD1903-W	REAR WING,WHITE,1/8	
PD1910	FR SWAY BAR SET,2.7mm,S3	
PD1911	RR SWAY BAR SET,2.7mm,S3	
PD1932-B	CFRP. SERVO TRAY,BLACK,S3	
PD1937	A7075 ENGINE MOUNT PLATE	
PD1946-B	5-SPOKE WHEEL(2),17mm BLACK,1/11	
PD1946-G	5-SPOKE WHEEL(2),17mm GREEN,1/10	
PD1946-P	5-SPOKE WHEEL(2),17mm PINK,1/12	
PD1946-Y	5-SPOKE WHEEL(2),17mm YELLOW,1/9	
PD1951	ALUM SERVO TRAY POST,S3	
PD1981-B	MULTI-SPOKE WHEEL (2),BLACK,1/8	
PD1981-G	MULTI-SPOKE WHEEL (2),GREEN,1/8	
PD1981-P	MULTI-SPOKE WHEEL (2),PINK,1/8	
PD1981-W	MULTI-SPOKE WHEEL (2),WHITE,1/8	
PD1981-Y	MULTI-SPOKE WHEEL (2),YELLOW,1/8	
PD1989	A7075FR PLT R TRN,RF2 S3 OP	
PD1990	A7075FR PLT R TRN,RF3 S3 OP	
PD1991	A7075FR PLT R TRN,RR2 S3 OP	
PD1992	A7075FR PLT R TRN,RR3 S4 OP	
PD1994	ALUM SHOCK RETAINER,S3 OP	
PD1995	ALUM SHOCK BALL END SET,S3	
PD1996	FR SHOCK SPRING SET,1.4mm(BLUE3.2lb)1.6mm(BLACK5.2lb),S3	
PD1997	FR SHOCK SPRING SET,1.4mm(BLUE2.7lb)1.6mm(BLACK4.5lb),S3	
PD1998	STEEL MAIN GEAR,48T,S3	
PD2253	A7075 FLAT CHASSIS ,LONG	
PD2283	A7075 FLAT CHASSIS ,STD	
PD2286	CTR CVA UNIVERSAL,RR,S3	
PD2314-B	CFRP CTR DIFF PLT(B)	
PD6602-B	VELOCITY WHEEL (2),BLACK,1/8	
PD6602-G	VELOCITY WHEEL (2),GREEN,1/8	
PD6602-P	VELOCITY WHEEL (2),PINK,1/8	
PD6602-W	VELOCITY WHEEL (2),WHITE,1/8	
PD7778	LITE ENGINE MOUNT	

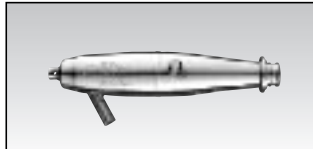
PART#	DESCRIPTION	NOTE
PD7779	CFRP. SERVO SAVER TOP PLATE(B) OPT	
PD7793US	USA DECAL	
PD7793DE	GERMANY DECAL	
PD7793IT	ITALY DECAL	
PD7793CH	SWITZERLAND DECAL	
PD7793FR	FRANCE DECAL	
PD7793UK	UNITED KINGDOM DECAL	
PD7793SE	SWEDEN DECAL	
PD7793ES	SPAIN DECAL	



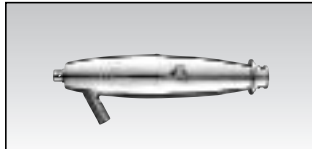
# EB-4 S3 RTR OPTIONAL PARTS LIST



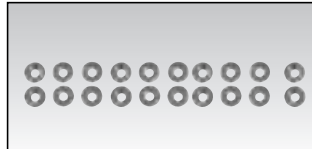
9708-B AIR FILTER, 1/8, BLACK  
9708-G AIR FILTER, 1/8, GREEN  
9708-P AIR FILTER, 1/8, PINK



9796 3-CHAMBER TUNED PIPE,EFRA 2035  
9796-1 3-CHAMBER TUNED PIPE,  
W/MANIFOLD EFRA 2035



9797 3-CHAMBER TUNED PIPE, EFRA 2039  
9797-1 3-CHAMBER TUNED PIPE,  
W/MANIFOLD EFRA 2039



AD2523-R ANODIZED WASHER(20),OPT



PD0399 ALUM.TURNBUCKLE WRENCH  
, 5mm



PD0740 CLUTCH BELL 26mm,15T,1/8  
PD0619 CLUTCH BELL 26mm,14T,1/8



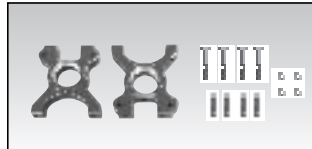
PD0680 CT MACH.SCREW(20),M3X14



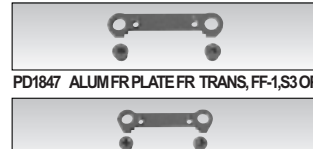
PD1840 A7075 FR SHOCK TOWER  
, S3 OPT



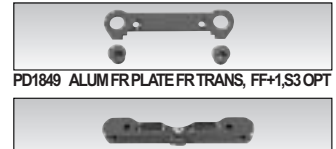
PD1841 A7075 FR SHOCK TOWER  
, S3 OPT



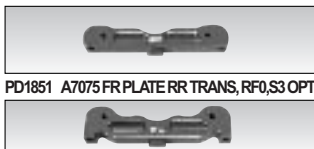
PD1845 CTR DIFF MOUNT, S3 OPT



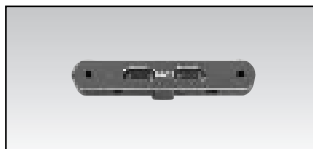
PD1847 ALUM FR PLATE FR TRANS, FF-1,S3 OPT



PD1849 ALUM FR PLATE FR TRANS, FF+1,S3 OPT



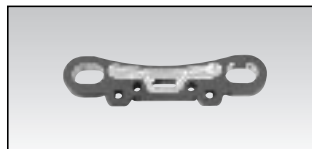
PD1851 A7075 FR PLATE RR TRANS, RF0,S3 OPT



PD1853 A7075 RR PLATE RR TRANS  
, RF+2, S3 OPT



PD1854 A7075 RR PLATE RR TRANS  
, RR, S3 OPT



PD1855 A7075 UPPER ARM PLATE  
, S3 OPT



PD1856 UPPER ARM HOLDER,S3 OPT



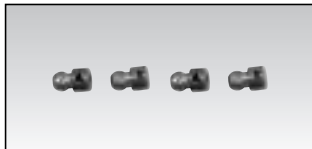
PD1857 ALUM SERVO SAVER SET,S3 OPT



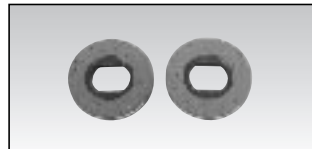
PD1858 A7075 STEERING SLIDER  
W/BB,S3 OPT



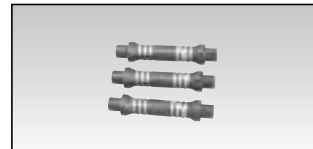
PD1859 LITE ENGINE MOUNT,S3



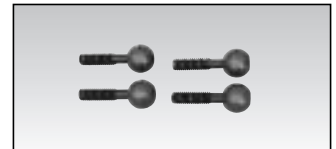
PD1860 HARD SWAY BAR BALL,S3



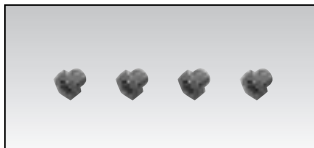
PD1861 HEATSINK DISC BRAKE,S3 OPT



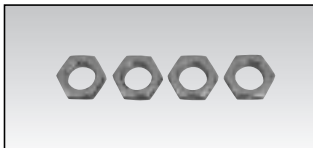
PD1862 WING POST,S3 OPT



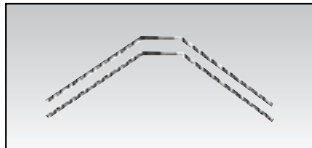
PD1863 LITE PIVOT BALL,S3 OPT



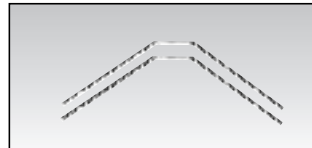
PD1864 LITE HEX WHL ADAPTER  
, S3 OPT



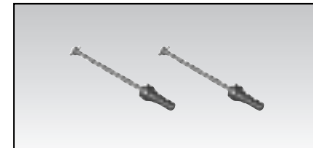
PD1865 LITE SELF-LOCK WHL HEX  
NUT, S3 OPT



PD1866 FR/RR SWAY BAR,GOLD 3mm  
, S3 OPT



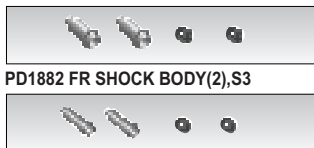
PD1867 FR/RR SWAY BAR,SILVER  
2.5mm, S3 OPT



PD1873 RR CVA UNIVERSAL(2),S3



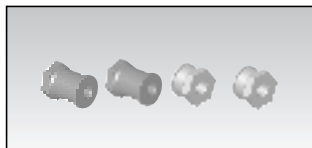
PD1879 SHOCK PISTON(4),S3 OPT



PD1882 FR SHOCK BODY(2),S3



PD1884 A7075 SHOCK CAP



PD1891 ALUM FR/RR SHOCK MOUNT  
STUD,S3



PD1894 CNC DIFF BEVEL GEAR SET

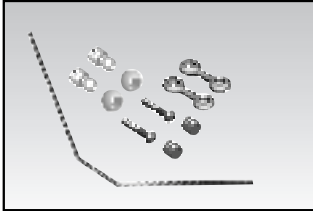


PD1896 DIFF SHIME(10),0.3mm,S3

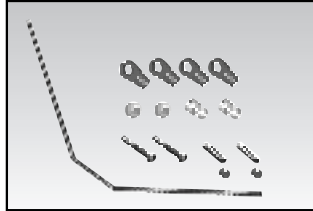


PD1903-B REAR WING,BLACK,1/8  
PD1903-G REAR WING,GREEN,1/8  
PD1903-P REAR WING,PINK,1/8  
PD1903-W REAR WING,WHITE,1/8

# EB-4 S3 RTR PARTS LIST



PD1910 FR SWAY BAR SET, 2.7mm, S3



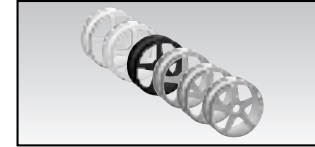
PD1911 RR SWAY BAR SET, 2.7mm, S3



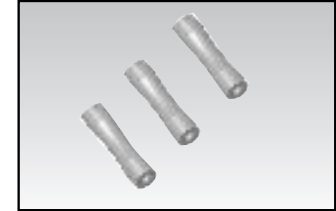
PD1932-B CFRP SERVO TRAY, BLACK, S3



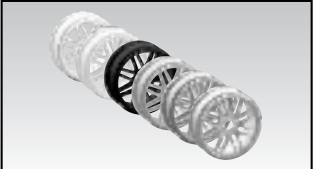
PD1937 A7075 ENGINE MOUNT PLATE



PD1946-B 5-SPOKE WHEEL (2), 17mm BLACK, 1/11  
 PD1946-G 5-SPOKE WHEEL (2), 17mm GREEN, 1/11  
 PD1946-P 5-SPOKE WHEEL (2), 17mm PINK, 1/11  
 PD1946-W 5-SPOKE WHEEL (2), 17mm WHITE, 1/11  
 PD1946-Y 5-SPOKE WHEEL (2), 17mm YELLOW, 1/11



PD1951 ALUM SERVO TRAY POST, S3



PD1981-B MULTI-SPOKE WHEEL (2), BLACK, 1/8  
 PD1981-G MULTI-SPOKE WHEEL (2), GREEN, 1/8  
 PD1981-P MULTI-SPOKE WHEEL (2), PINK, 1/8  
 PD1981-W MULTI-SPOKE WHEEL (2), WHITE, 1/8  
 PD1981-Y MULTI-SPOKE WHEEL (2), YELLOW, 1/8



PD1989 A7075FR PLT R TRN, RF2 S3 OP



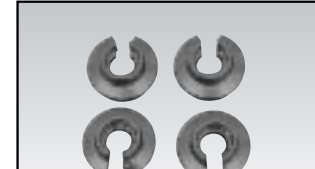
PD1990 A7075FR PLT R TRN, RF3 S3 OP



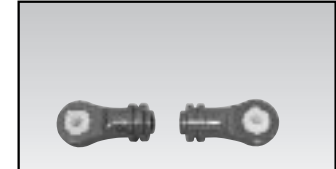
PD1991 A7075FR PLT R TRN, RR2 S3 OP



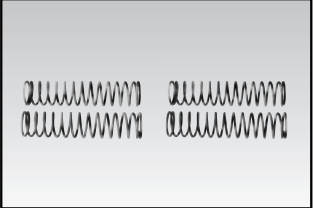
PD1992 A7075FR PLT R TRN, RR3 S4 OP



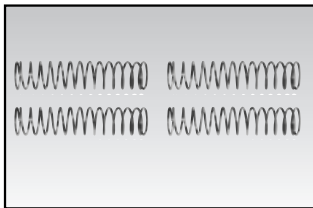
PD1994 ALUM SHOCK RETAINER, S3 OP



PD1995 ALUM SHOCK BALL END SET, S3



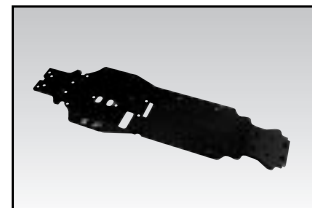
PD1996 FR SHOCK SPRING SET,  
 1.4mm (BLUE 3.2lb)  
 1.6mm (BLACK 5.2lb), S3



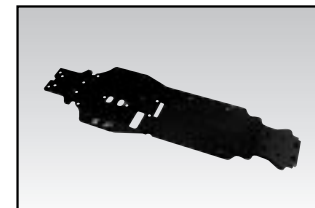
PD1997 FR SHOCK SPRING SET,  
 1.4mm (BLUE 2.7lb)  
 1.6mm (BLACK 4.5lb), S3



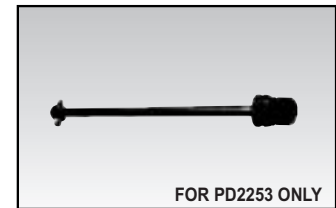
PD1998 STEEL MAIN GEAR, 48T, S3



PD2253 A7075 FLAT CHASSIS, LONG



PD2283 A7075 FLAT CHASSIS, STD



FOR PD2253 ONLY  
 PD2286 CTR CVA UNIVERSAL, RR, S3



PD2314-B CFRP CTR DIF PLT (B), ST-1



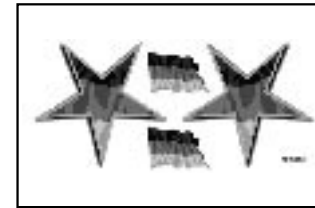
PD6602-B VELOCITY WHEEL (2), BLACK, 1/8  
 PD6602-G VELOCITY WHEEL (2), GREEN, 1/8  
 PD6602-P VELOCITY WHEEL (2), PINK, 1/8  
 PD6602-W VELOCITY WHEEL (2), WHITE, 1/8



PD7779 CFRP SERVO SAVER TOP  
 PLATE (R) OPT



PD7793US USA DECAL



PD7793DE GERMANY DECAL



PD7793IT ITALY DECAL



PD7793CH SWITZERLAND DECAL



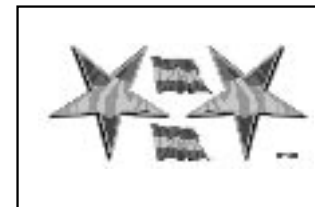
PD7793FR FRANCE DECAL



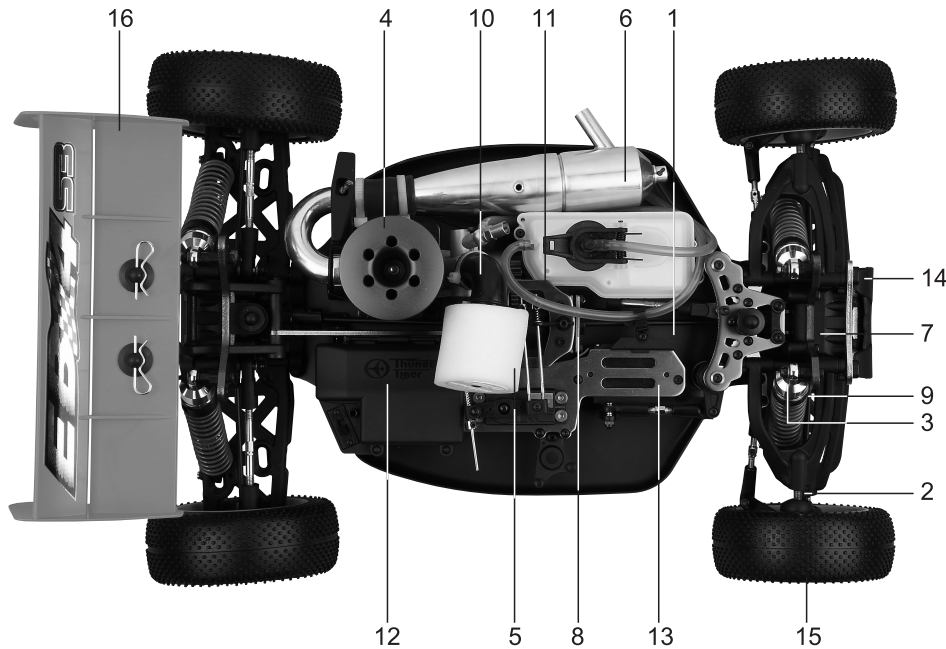
PD7793UK UNITED KINGDOM DECAL



PD7793SE SWEDEN DECAL



PD7793ES SPAIN DECAL



- 1) Anodized chassis with narrow configuration for stable handling.
- 2) Easily adjustable front pivot-ball suspension
- 3) Full metal oil-filled shocks with large volume anodized shock bodies
- 4) Thunder Tiger Pro-21 / Pro-28 ball-raced pullstart engine with slide carburetor
- 5) Dual stage air cleaner
- 6) Polished CNC machined aluminum tuned pipe and manifold
- 7) 3 small-lightened gear differentials with constant shaft driven 4WD design
- 8) Dual metal brake disc
- 9) Heavy duty CVD universal front drive train
- 10) Lightened and small size flywheel
- 11) Anodized alloy front brace, radio tray and center diff top plate
- 12) Enclosed dust-resistant radio & battery box
- 13) Laid down steering servo for low center of gravity
- 14) Captured hinge pins require no retaining clips
- 15) Complete set of rubber-sealed ball bearings included
- 16) Wheels, printed polycarbonate body and one piece nylon wing all included

### Specification

Length: 496mm/19.5in  
 Width: 305mm/12in  
 Height: 180mm/7.08 in  
 Weight: 3200g/7.05lb approx.  
 Wheelbase: Adjustable from 320mm to 330mm  
 Front track Width: Adjustable from 295mm to 305mm  
 Rear track Width: 300 mm  
 Front Caster: Adjustable from 16 to 25  
 Front Anti-Dive: -1 0 +1 (Front kick up: 7)  
 Rear Anti-Squat: 0 +2 +3 +4  
 Front Toe: 0 with adjustable Turnbuckle.  
 Rear Toe-in: 1 +1.5 +2 +3

### Gearing

Pinion/Spur: 13:46  
 Primary: 3.54:1  
 Internal: 3.31:1  
 Final: 11.72:1



## ACCESSORIES RECOMMENDED

### ACE RC® Super Torque Digital Servo



No.8128 DS1313

No.8127 DS1015



### Glow Starters

No.2156 2.4AH Glow STR-L,110V 2P  
 No.2157 2.4AH Glow STR-L,230V 2P  
 No.2158 2.4AH Glow STR-L,230V 3P



No.1261  
600cc Fuel Bottle  
 No.1266  
300cc Fuel Bottle



No.1103  
Hex Driver Set

### Rx Battery



No.2931 Ni-MH Battery Pack/Flat,  
6V/1200mAh 2/3A



No.2932 Ni-MH Battery Pack/Hump,  
6V/1200mAh 2/3A

### PRO Starter box

No.2409

